

H-384

Skapad av: Pourquoi pas

Ålder: 29

Stadsdel: Centrum

Kategori: nybygge

Adress: Stapelbäddsgatan 3

Sida skapad: 14 juni, 2012

Beskrivning:

STUDENT HOUSING AT STAPELBÄDDSPARKEN

Stapelbäddsparken is an attractive part of Malmö for young people. It is central and already benefits from existing structures aimed at a young audience such as a cultural center (Stpln) and a skatepark.

The slipway, for instance, is a particularly representative icon of Malmö's history and my contribution proposes to reuse it as a support for student housing.

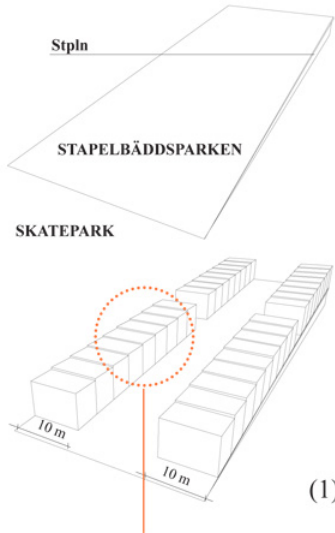
The space underneath the slipway is already dedicated to Stpln, while the area at its base is occupied by the skatepark. By integrating student housing on the leaning slipway, the different components of Stapelbäddsparken get reinforced and would further benefit from this new close relationship.

YouTube: Ingen

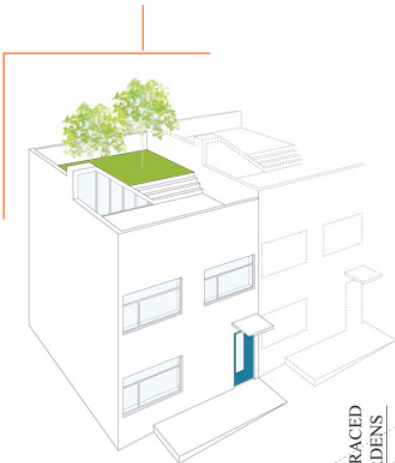
Bilder:



STUDENT HOUSING AT STAPELBÄDDSPARKEN

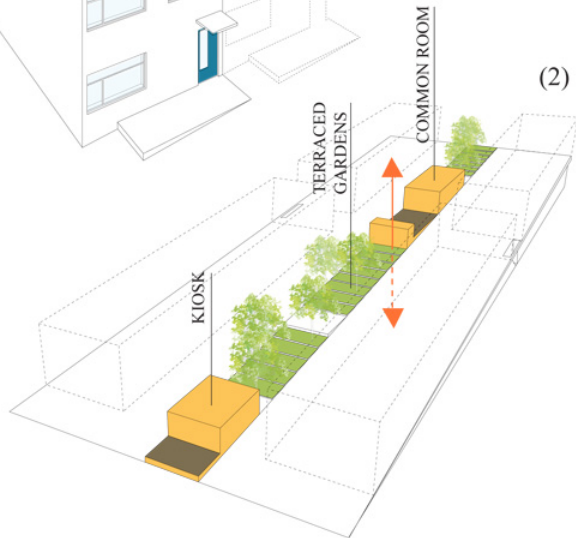


(1)

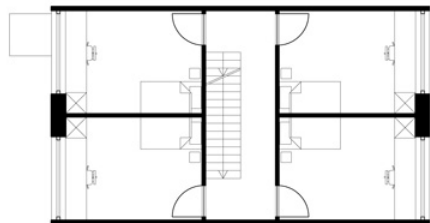


This contribution proposes to build student housing at Stapelbäddsparken, using the old slipway as a support for the project. Its situation close to the city center is ideal, while it also benefits from its direct neighborhood : the skatepark and the cultural center “Stpln”, right underneath the slipway.

- (1) The proposal consists of identical units of housing, next to each other and along the edges of the slipway. Between these two rows of housing is a large common space, from which you access the apartments.
- (2) This outdoor space, in direct relation to the skatepark, further benefits from terraced gardens ■, a kiosk and a common room ■ for the students. The cultural center underneath is accessible through a new staircase. ↔
- (3) One unit of housing is approximately 112 m², which is shared by 4 students. Each unit benefits from a private terraced roof.

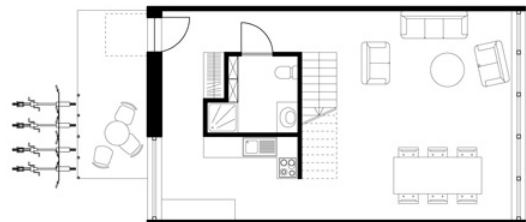


(2)



PLAN 2

(3)



PLAN 1

The cost of construction can be reduced thanks to a systematic approach in which the same unit is repeated throughout the project. Differences between the units can instead be expressed in the composition of their facades, e.g. Here are a few references :

- (1) **Enbostadshus i Kärrtorp**
A1 Arkitekter
- (2) **Housing in Biel-Benken**
Peter Zumthor
- (3) **Lofts Yungay II**
Rearquitectura

